

INSTRUCTIONS FOR ORDERING PARTS

(PLEASE READ CAREFULLY)

Please give model number, part number and name. Give serial number and state caliber or gauge and choke. Identify parts from list, picture or exploded view. List interchangeable shotgun barrels on separate order form to speed shipment.

Cover only one subject in letter or order. Do not order parts and give repair instructions in same letter.

Please do not ship sample parts if they may be identified otherwise. See shipping instructions below.

Parts will be supplied for discontinued models if available. Parts cannot be supplied nor guns repaired if not listed in complete line parts list. Parts, being made to close dimensions, may require slight adjustment or fitting to assure proper function of arm.

IMPORTANT: Do not combine Part Orders with Gun Service Orders. Please send Part Orders direct to:

REMINGTON ARMS COMPANY, INC.
PARTS DEPT.
ARMS SERVICE DIVISION
Ilion, New York 13357

Model 541-S Custom Sporter Bolt Action Rifle 22 Caliber Owner's Manual

INSTRUCTIONS FOR FACTORY SERVICE

(PLEASE READ CAREFULLY)

Please package carefully. Use plenty of cushioning material to prevent movement of gun or parts in package. Please do not ship gun in a gun case, or special container that must be returned. Return of gun or parts will be expedited if properly packaged in a throw-away carton. Clearly mark forwarding and return address on gun package as well as on attached letter.

Securely attach complete letter of information on outside of each package returned to factory for repairs. Please do not return gun accessories such as sling straps, quick release swivels, special boots, covers, telescopes, mounts or any special equipment to factory with gun shipment. Give full details of contents. State if complete gun or part. List model number, part number and name, serial number and caliber or gauge. Give full condition of contents — any parts missing or damaged, etc. This will enable us to accurately list needed repairs.

Do not order parts and give repair instructions in same letter. To avoid delay in starting work, please include in first order or letter the trouble to be corrected, changes desired or parts to be replaced. If an estimate is required please advise. Otherwise work will proceed and a statement of cost will be sent. This will speed service.

IMPORTANT — Remington firearms are designed, manufactured and proof tested to standards based on factory loaded ammunition. Improperly loaded handloads can be dangerous. Remington Arms Company, Inc. cannot assume responsibility for damages or injury caused by handloads or reloaded ammunition.

This gun has been manufactured to Remington specifications and shipped from the factory suitable for use. Remington does not recommend and is not responsible for any alteration or modification to the gun not made by Remington factory personnel, nor the replacement of worn or damaged parts with those not of Remington manufacture.

Unless specified otherwise, shipments will be made by way of Parcel Post on small packages, Express on larger packages. Remington gun parts are not interchangeable with those of any other make. For this reason the Remington Arms Company, Inc., cannot service any gun not of its manufacture.

Repairs will be made on discontinued models as long as supply of parts is available. However, repairs cannot be made for models which are not listed in Complete Line Parts Lists.

IMPORTANT: Before packaging guns for return to factory, **ALL LIVE AMMUNITION SHOULD BE REMOVED.**

If live ammunition is included in package, shipment cannot be made by Insured Mail. All other shipments may be made by Insured Mail, Please send repairs direct to:

REMINGTON ARMS COMPANY, INC.
ARMS SERVICE DIVISION
Ilion, New York 13357

Remington®

22 CALIBER BOLT ACTION RIFLE

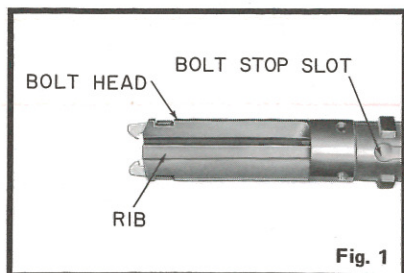


Fig. 1

TO PUT BOLT IN RIFLE — Align bolt stop slot on bolt body (Fig. 1) with rib on bottom (flat) of bolt head. Rotate and press safety (Fig. 3) forward beyond "F" marking. This will depress bolt stop in receiver. Insert and push bolt into receiver beyond bolt stop. Safety may then be released.

TO COCK BOLT — Bolt must be cocked to put into rifle. Should bolt become uncocked, cocking piece (Fig. 2) will snap forward into cocking cam in rear of bolt. Slide cocking piece rearward (vise jaws or other suitable clamping may be used) and rotate bolt plug clockwise or lift bolt handle until cocking piece will snap into detent on rear edge of bolt.

SAFETY — (Fig. 3) Rotate safety to rear stop position marked "S" on receiver. Trigger cannot now be pulled to fire rifle.

TO SINGLE LOAD — Place safety On Safe. Raise bolt handle to unlock bolt. Open action and place cartridge upon magazine follower or directly into chamber. Close bolt and lower bolt handle to lock action.

TO UNLOAD CHAMBER — Place safety On Safe. Raise bolt handle, open action and remove cartridge from barrel chamber.

TO MAGAZINE LOAD — Clip magazine may be removed by rotating magazine latch (Fig. 4) rearward. Capacity of magazine is five (5) cartridges. To reassemble, fit channel opening on rear of magazine over end of magazine guide. Push magazine up into stock until locked in place by magazine latch.

CAUTION: Before firing make sure barrel bore is clean and free of heavy oil, grease, snow or any obstruction.

TO FIRE AND EJECT — Be sure rifle is pointed where you want to shoot. Rotate safety to forward stop position marked "F" on receiver. Trigger can then be pulled and rifle fired. To eject fired case, lift bolt handle and pull bolt fully rearward.

TRIGGER — No adjustment of trigger by the owner is recommended. Trigger pull has been factory adjusted. Should any adjustment be necessary return rifle to factory or see a Remington approved gunsmith.

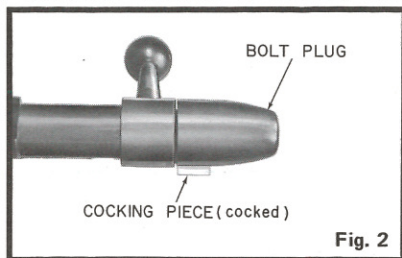


Fig. 2

TO REMOVE BOLT — Lift bolt handle and pull bolt rearward to bolt stop. Rotate and hold safety completely forward and withdraw bolt from rifle.

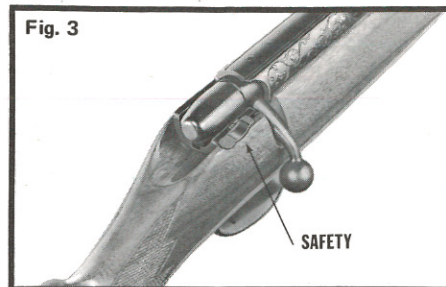


Fig. 3

BARREL CLEANING AND CARE — Remove bolt. Wipe bore with 22 caliber cleaning patch. It is important that bore be cleaned from breech to muzzle to prevent shooting residue in barrel from falling into action. Use lightly oiled cloth patch after cleaning. Wire brush, if necessary, with powder solvent.

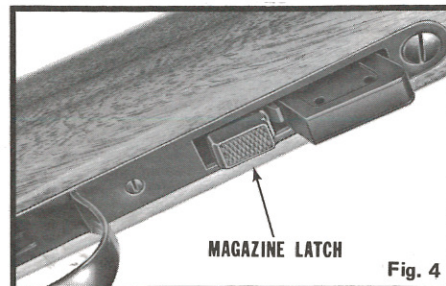


Fig. 4

ACTION CLEANING AND CARE — Should it be necessary to clean action, the stock should be removed. Unscrew takedown screw. Remove stock. Wash action with petroleum solvent, such as kerosene. Wipe clean and re-oil lightly. **Cocking cam surfaces on bolt should be kept lubricated.** When shooting in freezing weather, remove excess oil and use dry graphite as lubricant.

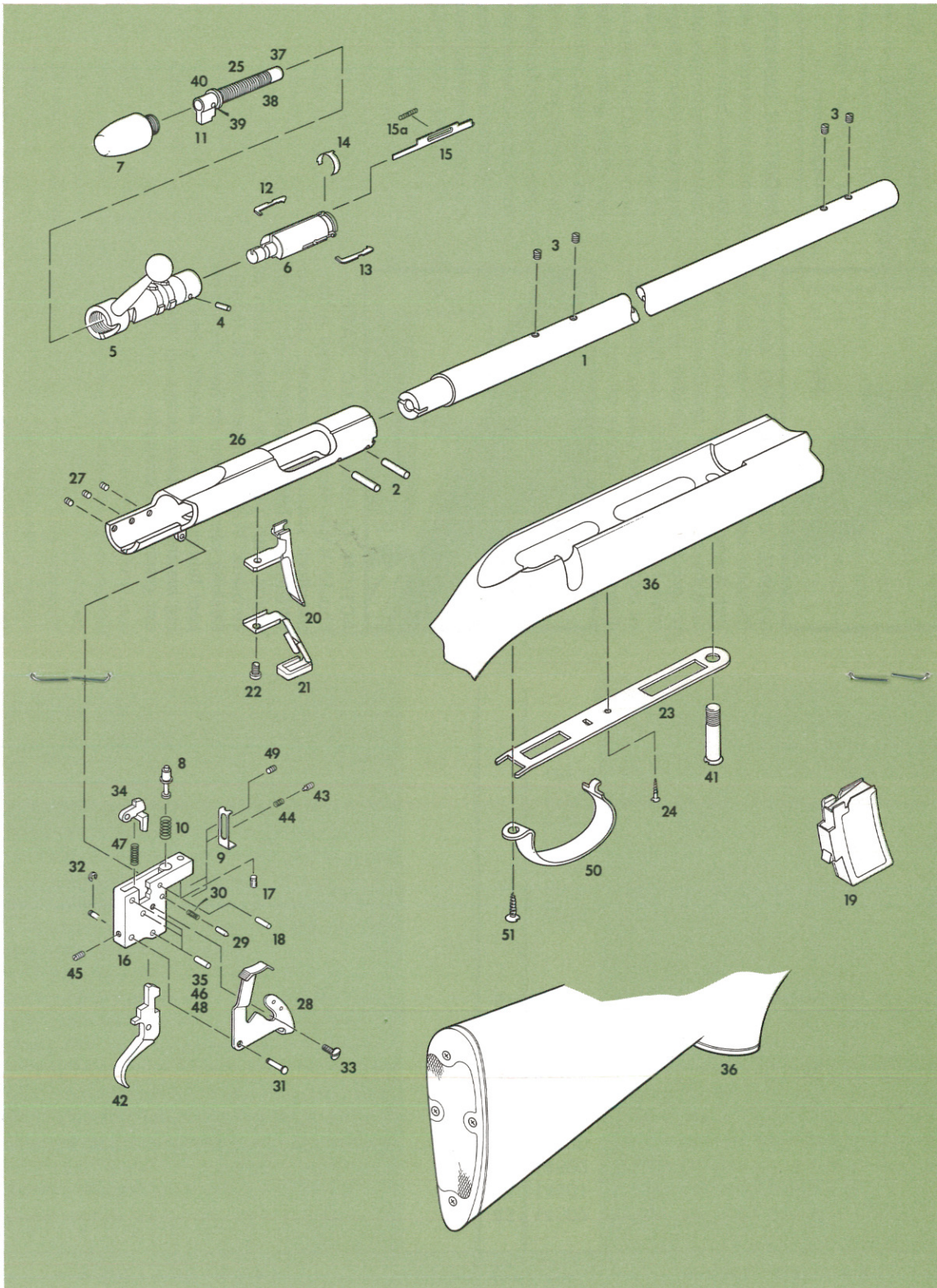
HANDLING AND EXPOSURE CARE — Handling leaves invisible "prints" of moisture that can cause rust to metal parts. Wipe receiver and barrel with oiled cloth after handling. Abrupt changes in temperature cause condensation and moisture; therefore, special care to interior metal parts is needed to prevent rusting.

MAINTENANCE — Gun should be checked periodically by a competent gunsmith to ensure proper inspection and any necessary replacement of worn or damaged parts.

SHOOTING GLASSES. Smart shooters, who don't normally wear corrective lenses, always hunt and shoot wearing good, impact-resistant shooting glasses in order to protect their eyes against unanticipated ricochet, possible powder blowback, or branch and twig whiplash. In addition to eye safety, green or gray glasses keep the eyes fresh and untired on bright, glary days, while yellow lenses aid in spotting game in dim or fading light. So for safety, comfort and better shooting — both in the field and on the target range — shooting glasses are a real "must".



MODEL 541-S 22 CALIBER BOLT ACTION RIFLE



Send all guns for factory service and inquiries on service and parts to
REMINGTON ARMS COMPANY, INC.
 Arms Service Division
 Ilion, New York 13357

REMINGTON ARMS CO. INC
 198 MARKET ST.
 WILMINGTON, DE 19898

For instructions how to dress, ship and deliciously cook wild game, send for the Remington "Wild Game" Cookbook \$3.95 — Remington Sportsmen's Library, P.O. Box 432, Bridgeport, Conn. 06601.

NOTE: SEE INSTRUCTIONS FOR ORDERING PARTS

View No.	Part No.	NAME OF PART	View No.	Part No.	NAME OF PART
1	14967	Barrel ----- (Restricted)	43	14502	Trigger Adjusting Screw-----
2	510-E-1	Barrel Assembly Pin-----	44	14501	Trigger Adjusting Spring-----
3	17034	Barrel Plug Screw-----	45	14502	Trigger Engagement Screw-----
	32140	Bolt Assembly, Complete -----(Restricted)		32130	Trigger Housing Assembly-----
4	18382	Bolt Assembly Pin-----	46	24477	Trigger Pin-----
5	32790	Bolt Body Assembly -----(Restricted)	47	14045	Trigger Spring-----
6	90529	Bolt Head -----(Restricted)	48	24477	Trigger Spring Retaining Pin-----
7	90582	Bolt Plug-----	49	14502	Trigger Stop Screw-----
8	14509	Bolt Stop-----	50	14971	Trigger Guard-----
	91471	Bolt Stop Washer-----	51	14042	Trigger Guard Screw-----
9	14510	Bolt Stop Release-----			
10	14496	Bolt Stop Spring-----			
	14976	Butt Plate-----			
	25380	Butt Plate Screw-----			
	14977	Butt Plate Spacer-----			
11	14007	Cocking Piece ----- (Restricted)			
12	14008	Extractor, L.H.-----			
13	14009	Extractor, R.H.-----			
14	14010	Extractor Spring-----			
15	91584	Firing Pin-----			
15a	91472	Firing Pin Return Spring-----			
	14973	Grip Cap-----			
	14974	Grip Cap Spacer-----			
	25380	Grip Cap Screw-----			
16	14519	Housing -----(Restricted)			
17	14027	Housing Lock Screw-----	15373		Front Sight (Alt. 15719 -----
18	14031	Housing Pin-----	15363		Front Sight Hood -----
19	29075	Magazine Assembly-----	90897		Front Sight Ramp -----
20	14047	Magazine Guide-----	28505		Front Sight Ramp Screw -----
21	32135	Magazine Latch Assembly-----	33000		Magazine Assembly - 10 Shot -----
22	14049	Magazine Latch Screw-----	32520		Rear Sight Assembly Complete -----
23	14980	Magazine Plate-----	26990		Sling Strap Assembly and Mountings Com- plete -----
24	14099	Magazine Plate Screw-----			
25	14884	Mainspring-----			
26	29133	Receiver Assembly ----- (Restricted)			
27	17034	Receiver Plug Screw-----			
28	14981	Safety-----			
29	14497	Safety Detent-----			
30	14498	Safety Detent Spring-----			
31	14015	Safety Pivot Pin-----			
32	14044	Safety Pivot Pin Washer-----			
33	14511	Safety Retainer Screw-----			
34	14503	Sear -----(Restricted)			
35	24477	Sear Pin-----			
36	32125	Stock Assembly-----			
37	29110	Striker Assembly-----			
38	14014	Striker-----			
39	14565	Striker Cross Pin-----			
40	14012	Striker Washer-----			
41	14071	Takedown Screw-----			
42	15949	Trigger ----- (Restricted)			

SPECIAL ACCESSORIES
(Added Cost)